

# AGENDA

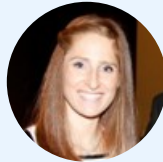
Why Programmable Connectivity Is the Engine Behind Smarter Transportation

## Virtual Council

### SPEAKERS



**Alex Walling**  
Chief Strategy Officer  
Nokia



**Christina Garcia**  
SVP, Engineering  
Echo Global Logistics



**Nikhil Arora**  
Director, Data  
Science &  
Engineering  
Schneider



**Mark Grob**  
Head of Immersive  
Tech  
UPS



**Anudeep Katangoori**  
Engineering  
Manager/Architect -  
Data Platform  
Knight-Swift  
Transportation



**Satyabrata Pradhan**  
Senior Program  
Manager  
General Motors

[Click Here to Register](#)

### WHY PROGRAMMABLE CONNECTIVITY IS THE ENGINE BEHIND SMARTER TRANSPORTATION



**August 11, 2025**

3:00 PM-4:15 PM

Eastern Time

The transportation and logistics industries are moving fast, but the next big leap in efficiency, safety, and automation won't come from vehicles alone. It'll come from the networks that connect them, and more specifically, the Network APIs that make those networks programmable and responsive.

In this dynamic panel, joins transportation and connectivity experts along with Nokia to explore how Network APIs are redefining the movement of goods, machines, and people. We'll unpack critical use cases where APIs aren't just useful, they're essential:

- Remote Operations: enabling safe, real-time control of vehicles and machinery in ports, construction zones, and industrial sites through low-latency connectivity
- Fleet Management: optimizing routes, tracking connectivity status, and enabling predictive maintenance using

real-time network insights

- Reliable Asset and Vehicle Location: vital for indoor facilities, dense cities, and multimodal handoffs where standard GPS falls short

- Connected Transport Services: unlocking better customer experiences with context-aware data, network conditions, and location-based automation

Whether you run a delivery fleet, operate industrial equipment, or build digital logistics platforms, this session will show why Network APIs are the backbone of the next-generation transport ecosystem.

TOGETHER WITH  
**NOKIA**