

# AGENDA

## The Future of Healthcare Think Tank

### SPEAKERS



**Iris Berman**  
VP Virtual Care  
Northwell Health



**Rachael Spooner**  
VP Strategy &  
Development  
Northwell Health



**Janos Hajagos**  
Chief of Data  
Analytics  
Stony Brook  
Medicine



**Paul Haser MD**  
Chief Division of  
Vascular Surgery  
One Brooklyn Health



**Avijit Chatterjee  
Ph.D**  
Head of AI/ML  
MSKCC



**John Langone**  
VP Corporate  
Biomedical Services  
Northwell Health



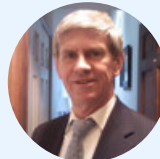
**Cindy Buchman**  
VP Strategic Planning  
& Operating Services  
Good Shepherd  
Rehabilitation  
Network



**Jodi Leffingwell**  
Head of People  
+MEDRITE



**Benjamin Goldstein**  
Principal  
North Star Outcomes



**Ivan Durbak**  
CIO  
BronxCare Health  
System



**Timothy Swope**  
CISO  
Lighthouse Cyber  
Risk Management



**Judith Heller**  
VP Physician  
Recruitment  
Northwell Health



**Tom Cushing RN**  
Principal Advisor IT  
Strategy &  
Application Solutions  
Northwell Health



**Emiliya Bagdasarian**  
Senior Director of  
Special Projects  
MedRite Urgent Care



**Steve Craig**  
Senior Technical  
Architect IT  
New York  
Presbyterian  
Hospital



**Jason Gottlieb**  
Director, Revenue  
Cycle Advisory  
Services  
New York  
Presbyterian  
Hospital



**Jose Azar MD**  
Executive Vice  
President  
Hackensack Meridian  
Health



**Alyeah Ramjit**  
VP System  
Transformation  
One Brooklyn Health



**Sunil Kakade**  
System VP enterprise  
Data, Analytics & AI  
CommonSpirit  
Health



**Jonathan Thornbury**  
Chief Architect  
Informatica



**Mark Cooper**  
President & Founder  
PKI Solutions



**Jon Batash MD**  
Chief Medical Officer  
Post Acute  
Cherish Health



**Purna Prasad Ph.D.**  
CEO  
Vedi Robotics at  
Sterling Universal  
Grp

[Click Here to Register](#)



**June 17, 2025**

Eastern Time

## Welcome & Registration

8:30 AM-9:00 AM

## Morning Networking

9:00 AM-9:30 AM

## Opening Remarks

9:30 AM-9:40 AM

## VISION VOICES KEYNOTE

### How AI is Re-Inventing Healthcare

9:40 AM-10:05 AM

Artificial Intelligence (AI) is revolutionizing healthcare, transforming everything from diagnostics to patient care and operational efficiency. Let's discuss three key components shaping this transformation:

- State of AI in Healthcare
- What AI Means to the Enterprise
- Keys to AI Governance and Strategy

#### PANELISTS



**Sunil Kakade**  
System VP enterprise  
Data, Analytics & AI  
CommonSpirit  
Health

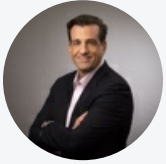
## KEYNOTE

10:10 AM-10:35 AM

# The Cybersecurity Mirage: Glitzy Threats Grab Headlines; Silent Ones Stop Ventilators

Artificial-intelligence exploits, quantum-proof crypto, double-extortion ransomware—these are the shiny objects crowding every board deck and budget cycle. Yet in most U.S. hospitals the far greater risk hides in plain sight: a brittle web of root certificates, HSMs, and identity stores silently holding every EHR login, infusion pump, and robot-pharmacy transaction together. One expired certificate can stall 10,000 lab results and delay critical care—all while leadership is busy funding pilot projects for threats that may never materialize. In this fast-paced, 25-minute keynote, Mark B. Cooper, President & Founder, reframes cybersecurity through a clinical lens. Blending real incident timelines, fresh 2024–25 breach data, and insights from NIST 1800-series healthcare pilots, he challenges CISOs to see beyond the buzzwords and ask: “Is our digital-trust foundation strong enough to support the innovation we crave?” Attendees will leave with a three-step “Digital Trust First” framework for continuous PKI visibility, resilience testing, and board-level metrics—plus a 30-day self-assessment checklist to kick-start action.

## PANELISTS



**Mark Cooper**  
President & Founder  
PKI Solutions

## PANEL

10:40 AM-11:25 AM

# Harnessing Data to Drive Innovation & Efficiency In Healthcare

Harnessing data securely in healthcare is essential for driving innovation and efficiency while ensuring patient privacy. By implementing robust data protection measures like encryption, access controls, and regular audits, healthcare organizations can safeguard sensitive information. Analyzing data with advanced technologies such as AI and machine learning enables precise diagnostics, personalized treatment plans, and predictive analytics. Secure data sharing across healthcare providers enhances collaboration and improves patient outcomes. Adhering to regulatory standards ensures compliance and builds patient trust. This secure approach to data management fosters innovation, enhances operational efficiency, and delivers high-quality, patient-centric care.

## CHAIR



**Emiliya Bagdasarian**  
Senior Director of  
Special Projects  
MedRite Urgent Care

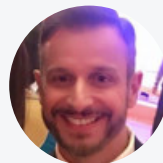
## PANELISTS



**Janos Hajagos**  
Chief of Data  
Analytics  
Stony Brook  
Medicine



**Jonathan Thornbury**  
Chief Architect  
Informatica



**John Langone**  
VP Corporate  
Biomedical Services  
Northwell Health



**Avijit Chatterjee**  
Ph.D  
Head of AI/ML  
MSKCC

## Networking Break

11:25 AM-11:45 AM

## PANEL

11:45 AM-12:30 PM

# Effective Strategies For Reducing Attrition in Healthcare: Building a Resilient Workforce

Attrition in healthcare is a growing concern, affecting patient care, operational stability, and workforce morale. High turnover rates among healthcare professionals stem from factors such as burnout, inadequate compensation, limited career growth, and workplace stress. Addressing these challenges requires a multi-faceted approach to enhance job satisfaction, retention, and overall workforce stability.

Reducing attrition requires a proactive approach that prioritizes employee well-being, competitive compensation, career growth, a positive workplace culture, and improved staffing solutions. Healthcare organizations that invest in retention strategies not only strengthen their workforce but also enhance patient care quality and operational efficiency.

## CHAIR



**Benjamin Goldsteen**  
Principal  
North Star Outcomes

## PANELISTS



**Jodi Leffingwell**  
Head of People  
+MEDRITE



**Judith Heller**  
VP Physician  
Recruitment  
Northwell Health

## PANEL

### Identity & Access Management

12:35 PM-1:10 PM

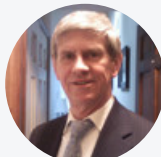
Identity management in healthcare is essential for protecting patient data and ensuring secure access to sensitive information. Implementing strong authentication methods, such as multi-factor authentication and biometrics, helps verify the identities of healthcare professionals and patients. Role-based access controls (RBAC) ensure that only authorized personnel can access specific data, minimizing the risk of unauthorized access. Regular audits and monitoring of access logs help detect and respond to potential security breaches. Educating staff about the importance of identity management and secure practices further enhances security. Effective identity management in healthcare supports regulatory compliance, protects patient privacy, and maintains trust in the system.

## CHAIR



**Timothy Swope**  
CISO  
Lighthouse Cyber  
Risk Management

## PANELISTS



**Ivan Durbak**  
CIO  
BronxCare Health  
System



**Steve Craig**  
Senior Technical  
Architect IT  
New York  
Presbyterian  
Hospital



**Tom Cushing RN**  
Principal Advisor IT  
Strategy &  
Application Solutions  
Northwell Health

## Lunch & Networking

1:15 PM-2:15 PM

## FIRESIDE CHAT

### Improving Healthcare Outcomes Diagnosis, Data &

2:15 PM-3:00 PM

## Patient Centric Care

Accuracy of diagnosis, data quality and patient centric care are the buzzwords around improving healthcare outcomes. Leveraging artificial intelligence with medical procedures to diagnose disease early, when there is the highest potential for impact. Data quality lives by accuracy, consistency, and relevancy. How can we improve data quality by reducing redundancy and decreasing medical errors? Patient centric care thrives if the partnership among practitioners, patients, and their families align with patients' wants, needs, and preferences. In this session, we will discuss what's working and what's not working, as we look to improve diagnosis, data quality and patient centric care.

### CHAIR



**Rachael Spooner**  
VP Strategy &  
Development  
Northwell Health

### PANELISTS



**Paul Haser MD**  
Chief Division of  
Vascular Surgery  
One Brooklyn Health



**Iris Berman**  
VP Virtual Care  
Northwell Health



**Alyeah Ramjit**  
VP System  
Transformation  
One Brooklyn Health

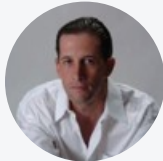
## VISION VOICES

### AI & Enterprise Revenue

3:05 PM-3:20 PM

Artificial Intelligence (AI) can the revenue cycle in healthcare by improving accuracy, speed, and compliance 1 . AI-driven automation helps streamline operations, capture missed revenue, and reduce administrative burdens 2 . However, trust, accuracy and workforce impacts are challenges that must also be considered

### PANELISTS



**Jason Gottlieb**  
Director, Revenue  
Cycle Advisory  
Services  
New York  
Presbyterian  
Hospital

## Networking Break

3:20 PM-3:40 PM

## PANEL

### Pioneering Innovation with AI and Analytics for Transformative Delivery

3:40 PM-4:25 PM

Pioneering clinic innovations are revolutionizing healthcare delivery by integrating advanced technologies and innovative practices. Telemedicine enables remote consultations, improving access to care and reducing patient wait times. AI-driven diagnostics and predictive analytics enhance accuracy and personalized treatment plans. Wearable health devices and IoT technology facilitate real-time monitoring and proactive health management. Implementing electronic health records (EHRs) and blockchain ensures secure, seamless

data sharing across healthcare providers. Personalized medicine, powered by genetic research, tailors treatments to individual patient needs. These transformative innovations enhance patient outcomes, streamline operations, and create a more efficient, patient-centric healthcare system.

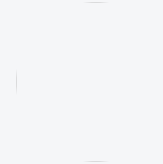
## PANELISTS



**Jose Azar MD**  
Executive Vice  
President  
Hackensack Meridian  
Health



**Cindy Buchman**  
VP Strategic Planning  
& Operating Services  
Good Shepherd  
Rehabilitation  
Network



**Jon Batash MD**  
Chief Medical Officer  
Post Acute  
Cherish Health

---

## Closing Remarks & Raffle Giveaway

4:25 PM-4:30 PM

---

## Cocktail Hour

4:30 PM-5:30 PM

---

TOGETHER WITH



Informatica

